

EVI Website Database.
www.vulnerabilityindex.net/daps/

Two changes need to be made for Internet Explorer to interact with the SQL database for the site.

1. URL must be added to list of trusted sites (if it isn't already).

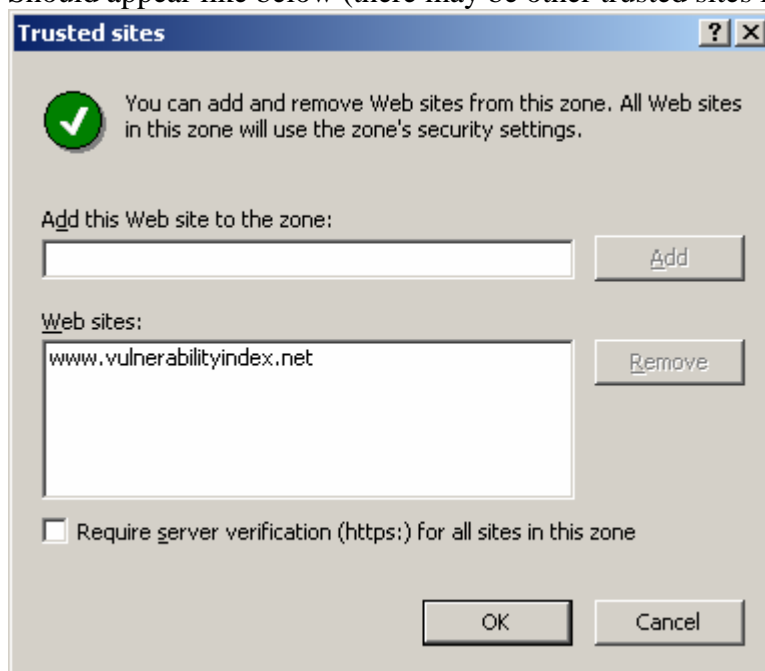
Select Tools- Internet Options, <Security> tab

Click on <Trusted Sites> icon then click on <Sites>

Make sure "Require server verification..." in un-ticked, type in

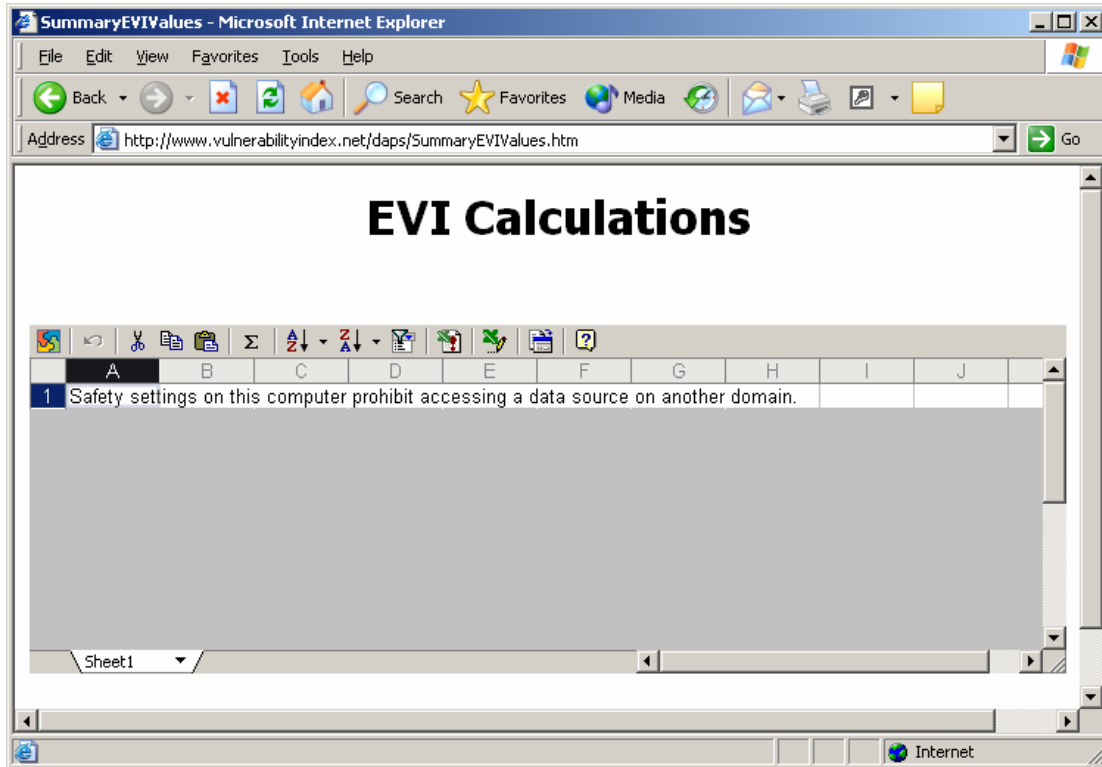
"www.vulnerabilityindex.net" in the "Add this Web site to the zone" box then click on <Add>.

Should appear like below (there may be other trusted sites in the list already)



Click <Ok>, & <Ok> to close the Internet Options dialog screen.

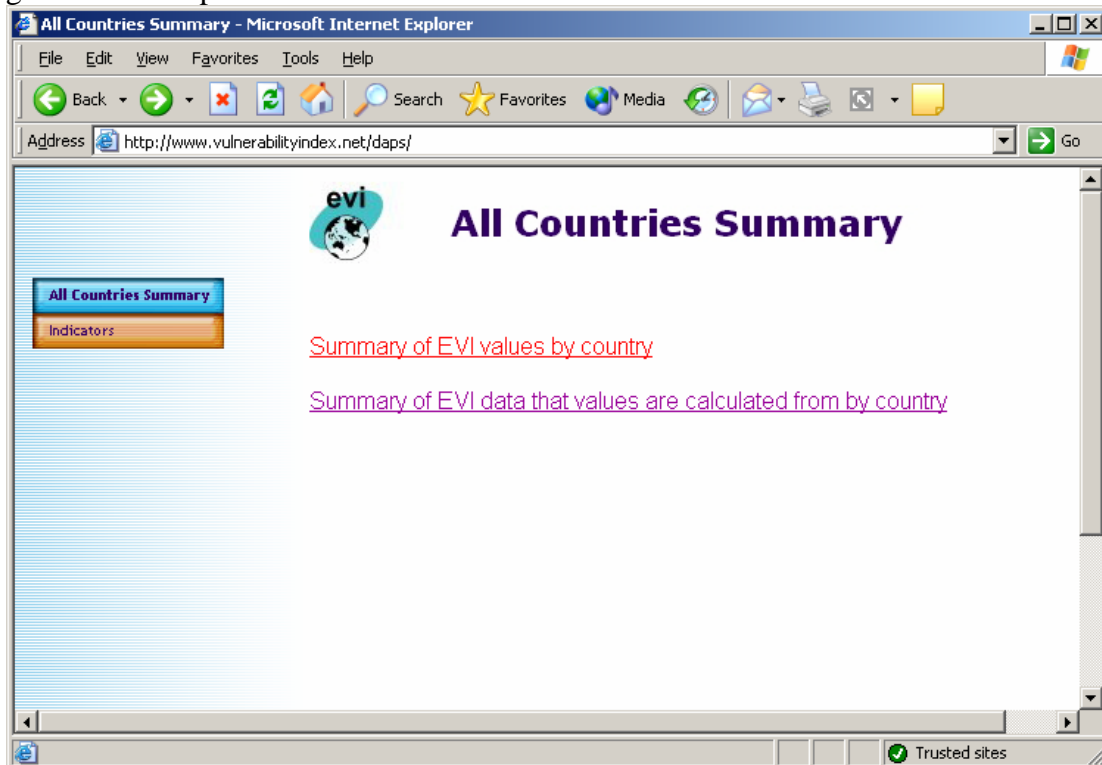
If this isn't done the site will not communicate with the MS SQL database. To show what happens in this situation if you select the "Summary of EVI values by country" link on the home page the screen below will appear:



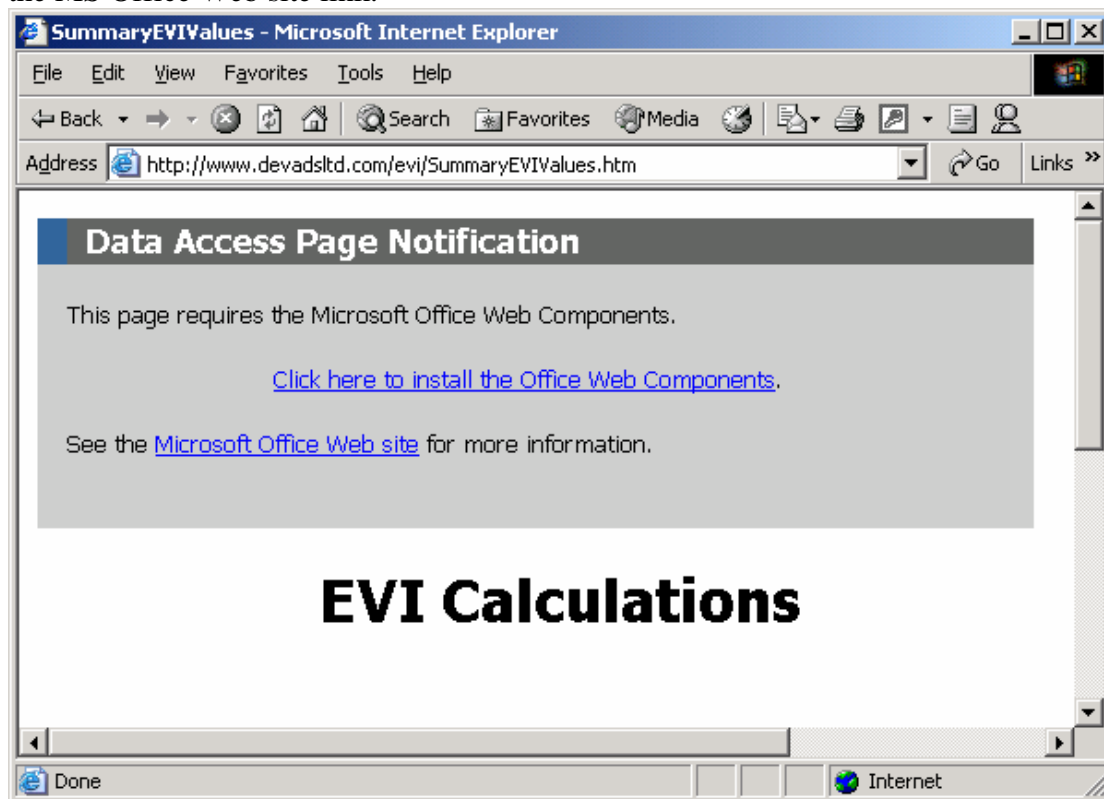
2. Office Web Components, an MS Office add on, needs to be installed.

The easiest way to know whether this has been done or not is to try using the site and see if any warning message appears.

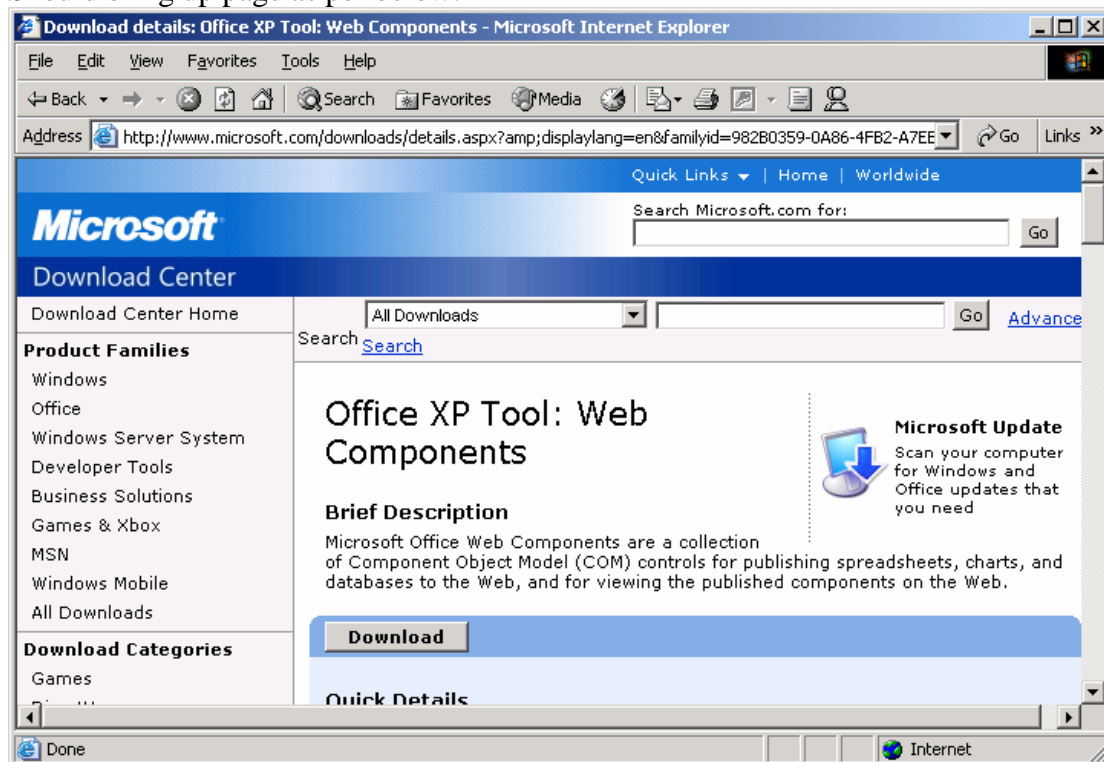
If you enter the URL www.vulnerabilityindex.net/daps into the browser you should get a screen as per below:



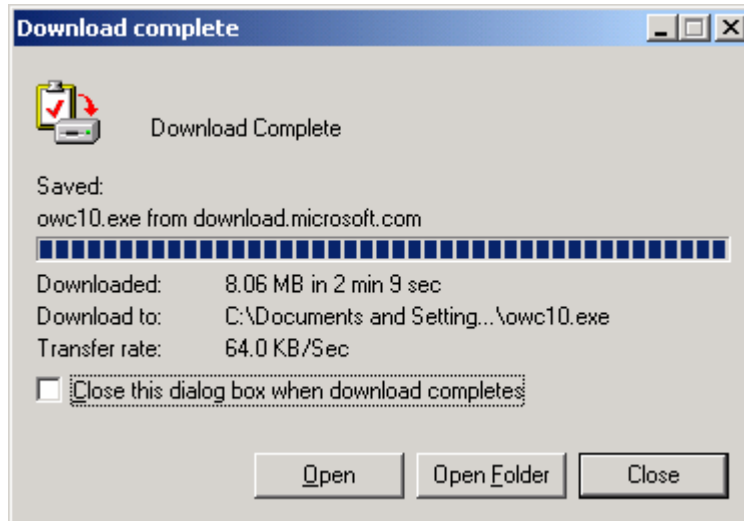
Click on <Summary of EVI values by country>. If you get the screen like below then the Office Web Components add on needs to be downloaded and installed. Click on the MS Office Web site link.



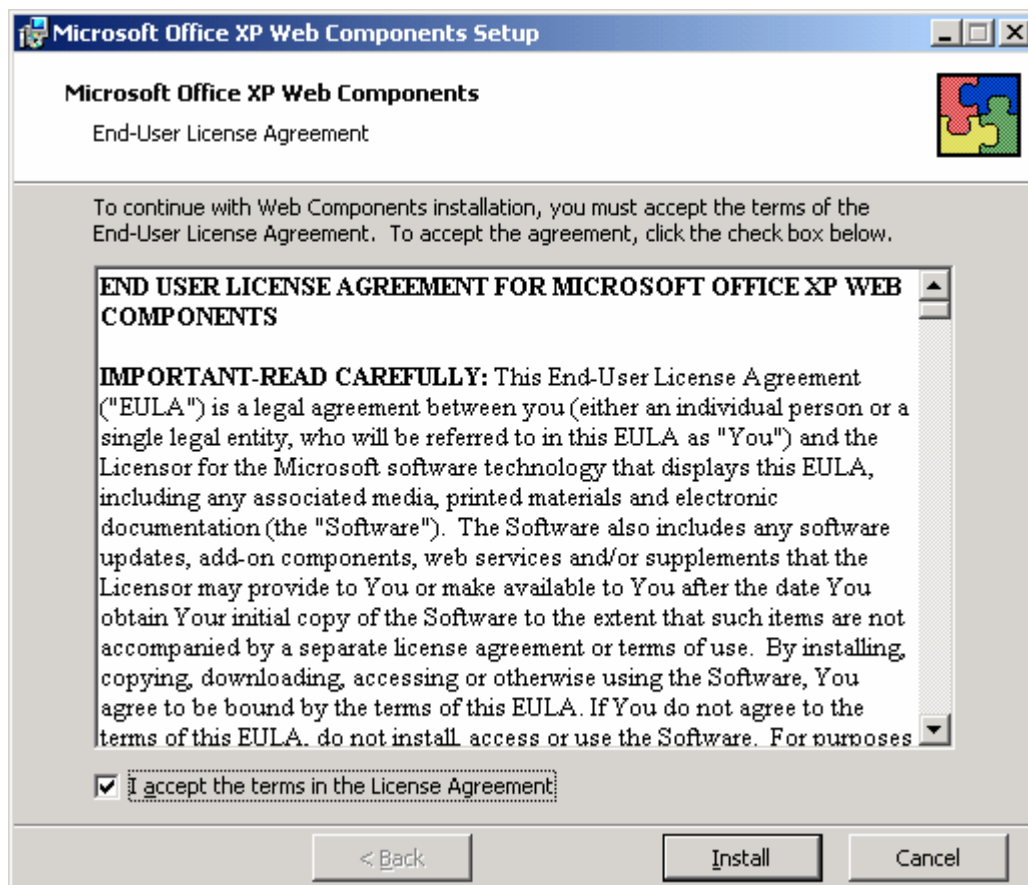
Should bring up page as per below:



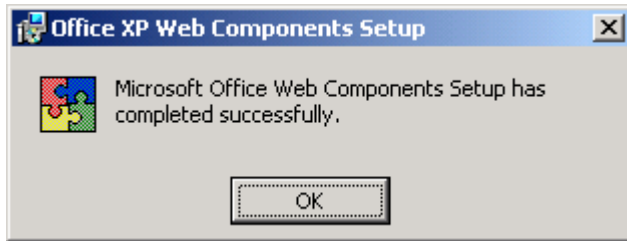
<Download> and save to local disk. File size may vary depending on Office version.



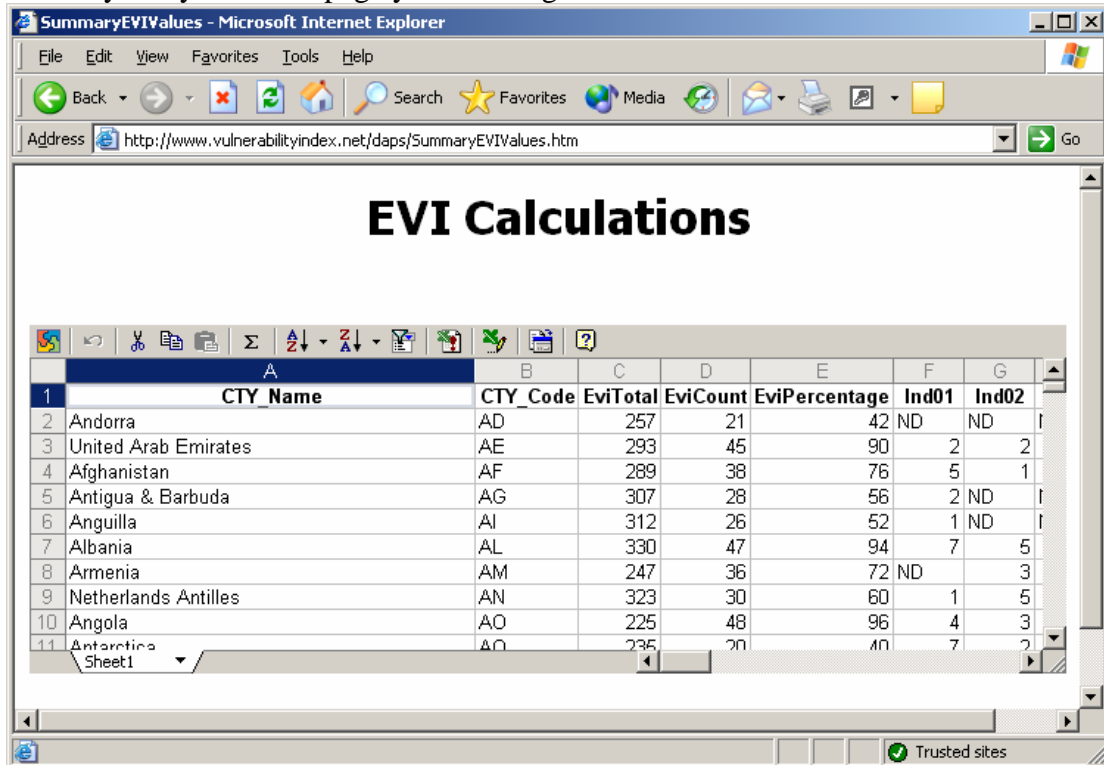
So long as you have installation privileges on your machine you should then be able to run the exe file.



Click on <Install> and let it do its thing.



Now if you try the same page you should get:



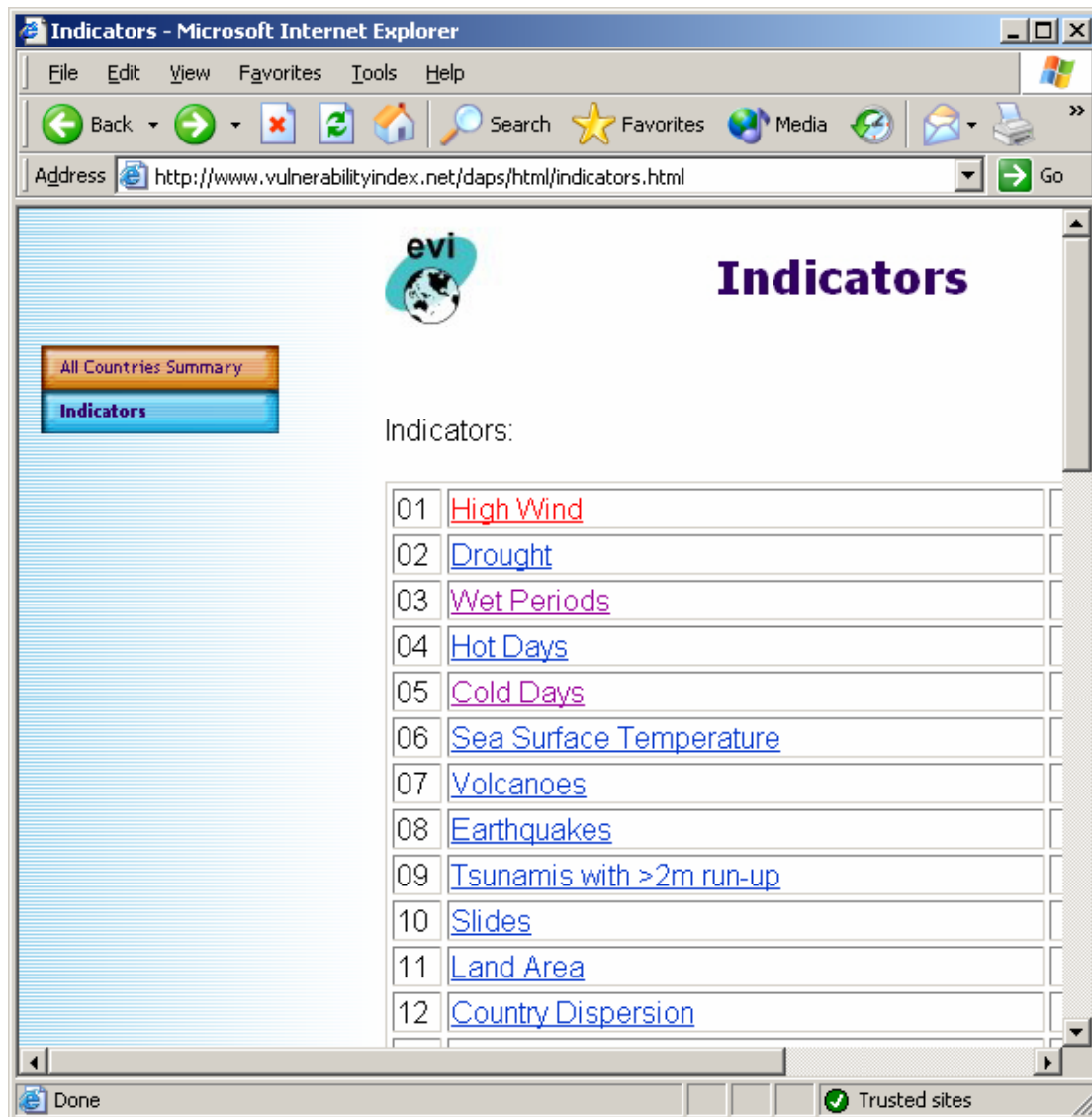
If nothing appears still then send me a screen dump or two (nzbungee@gmail.com) and I'll try to make sense of it.

The two page links on the home page give excel type summaries from the database which can be copy and pasted directly into excel. No data can be modified from these pages.

Notes on site.

The pages are based on the sheets of the original spreadsheet. The <Summary of EVI values by country> and <Summary of EVI data that values are calculated from by country> relate to the sheets giving all EVI values and all data values by country.

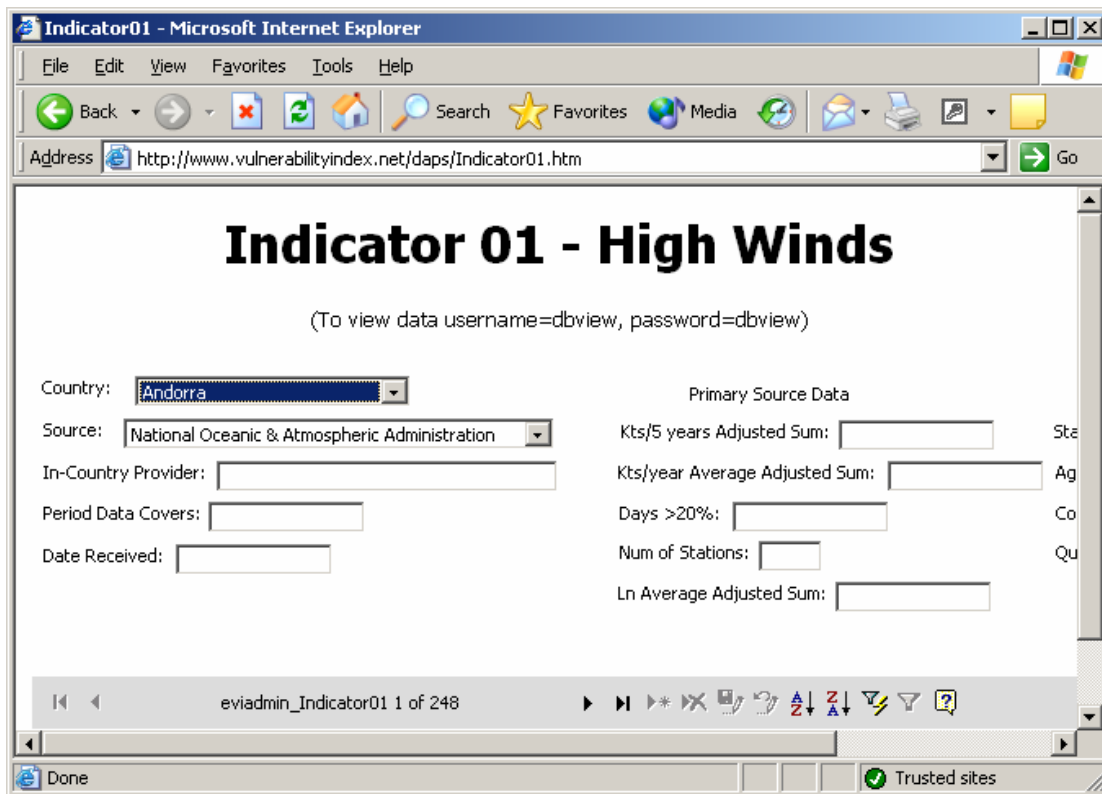
The page <Indicators>



has a link for each indicator which relate to each sheet for the 50 indicators. When you click on these links you will be prompted for a username and password.



The combination of dbview (username) & dbview (password) will open the page and allow viewing of the data with no edit/addition or delete capability.



This is showing records from the database with data as per the spreadsheet. Using the arrow buttons on the bottom toolbar moves through the recordset, the "AZ" and "ZA" will sort the recordset on the field where the cursor is positioned. Clicking on "Back" from the IE toolbar returns to the list of indicators screen. Each time an indicator page is opened the user name and password must be entered. The eviadmin user has rights to add, modify and delete records from the database.